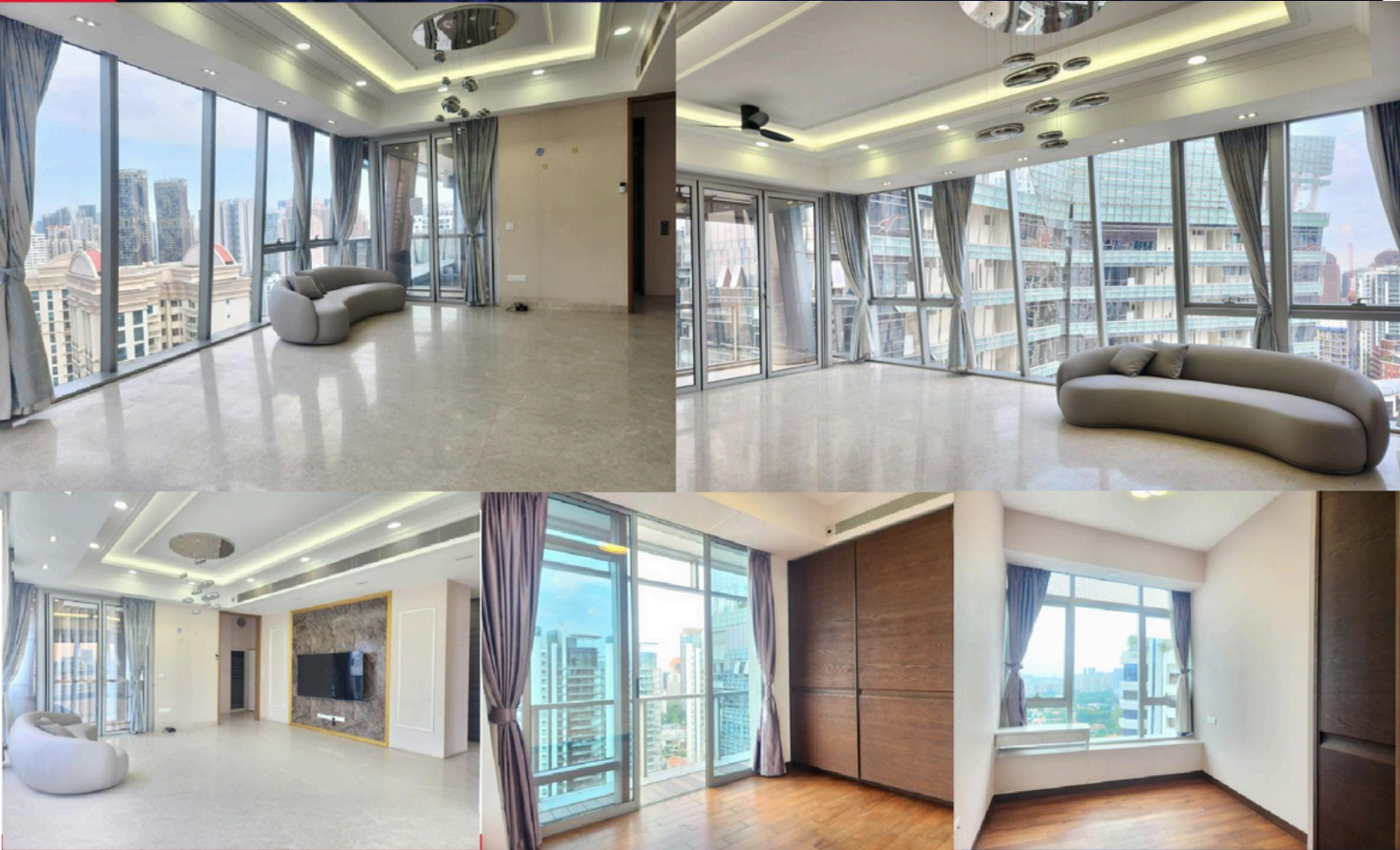


GRAMERCY PARK @ Grange Road

F'hold, 1948 sf, High Floor, 3 B/rm



Guide Price: \$6.3M @ \$3234 psf. *NEGOTIABLE!*

For more information,
please contact:

- #22 storey apartment 【[#22 一层豪华单位】】
- Floor Area : 1948 sf approx. 【面积约1959 方尺】】
- Freehold 【永久地契】】
- With private lift 【私人电梯直达家门】】
- Spacious living/dining with balcony 【格局宽敞,客厅饭厅附阳台】】
- 3 B/rms (all ensuites) + helper's room 【三卧房(全附浴室)工人房】】
- Bright and Windy 【明亮通风】】
- Full facilities 【完善的设施】】
- Near Orchard Road shopping belt & Orchard Boulevard MRT Station 【近乌节路商场 & 乌节大道地铁站】】
- Vacant possession on an "as is where is" basis 【包空出售】】

This document has been prepared by ERA Realty Network Pte Ltd for advertising and general information only. ERA Realty Network Pte Ltd makes no guarantees, representations or warranties of any kind, expressed or implied, regarding the information including, but not limited to warranties of content, accuracy and reliability. Any interested party should undertake their own inquiries as to the accuracy of the information. ERA Realty Network Pte Ltd excludes unequivocally all inferred or implied terms, conditions and warranties arising out of this document and excludes all liability for loss and damages arising therefrom. This publication is the copyrighted property of ERA Realty Network Pte Ltd and/or its licensor(s).

